

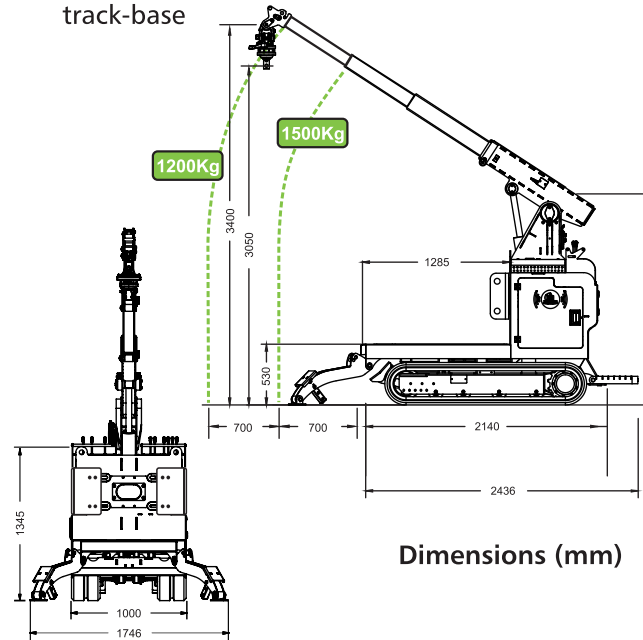
Key Facts

- Designed, engineered and manufactured in the UK to the highest quality
- Offers contractors and hire fleets alike a robust, fit for purpose piece of plant for years to come
- Manufactured around quality components - Honda power plant and Hinowa track-base
- Integrated 'load-lock' system allows a 1.7 tonne machine to safely lift and carry a payload of up to 1.5 tonnes
- Tracked base ensures unrivalled stability on uneven surfaces and 'turn on the spot' manoeuvrability with minimal ground damage
- Service network through Alfa Tail Lifts - established specialists in hydraulics, LOLER certification, etc., with over 35 engineers on the road in the UK - to ensure rapid service response and peace of mind back up
- UK made - ensures quality spare parts are always available quickly - rather than subject to Far East lead times!
- UK & International Patents pending
- CE Compliant



Specification

- Weight: 1700Kg
- Max lift / carry capacity: 1500Kg
- Power unit (3-year warranty):
 - Honda GX630 V-Twin Petrol Engine
 - Air cooled, electric start, 20.8HP (15.5Kw)
 - Emissions compliant
- Hinowa track-base



Dimensions (mm)



The unique lift and carry crawler for all bulk materials, plant and equipment



To discuss your requirements and prices please contact:

Anglia Handling Services Ltd.

Montgomery Way, Stratton Business Park

Biggleswade, Bedfordshire SG18 8QB

Tel: 01767 312125

Email: sales@angliahandling.co.uk

www.angliahandling.co.uk

- ONLY 1 metre wide to match pallets and bulk bags, **HOOKA** provides unrivalled access and delivers materials direct into the heart of your site
- Huge savings on labour costs - no more barrowing of materials and bad backs!
- 'Load-lock' technology ensures total stability
- Ideal for moving root ball trees, garden statues, hot tubs and waste to kerbside in bulk bags - removing the need for skips and their costly / tedious permits
- Weighs only 1.7 tonnes - can be delivered by HIAB lorry or 4x4 plant trailer - yet lifts 1.5 tonnes





Problem 1

Your bulk building materials supplier is only prepared to drop your goods 'at roadside' and you are faced with a huge labour cost simply to break down the materials and shift them to where you are working.

Problem 2

Heavy plant and equipment - up to 1.5 tonnes - is delivered to site but restricted access means it has to be winched and dollied into position.

Solution

HOOKA picks up any bulk material payload (pallets or 1 tonne bags), or pieces of plant up to 1.5 tonnes. It then secures the load onto its bed using the patent pending 'load lock' system and transports it quickly and efficiently to exactly where it is required.

HOOKA also enables spoil and other waste materials to be stored in 1 tonne bags around a site. They can then be moved to roadside at the time of waste collection - thereby removing the need for skips and their costly / tedious planning permits.

HOOKA also offers incredible versatility as a mobile 'tool platform' - with its double acting main ram and bolt-on boom end plate it can act as a lifting device, fence post remover or whatever else your business needs!

Optional extras include a dozer blade for levelling loose materials and (currently under development) a hydraulic emptying 'tote' box, which will allow the **HOOKA** to be used as a hi-tip dumper and even lift bricks / blocks to scaffold 'first-lift' height.