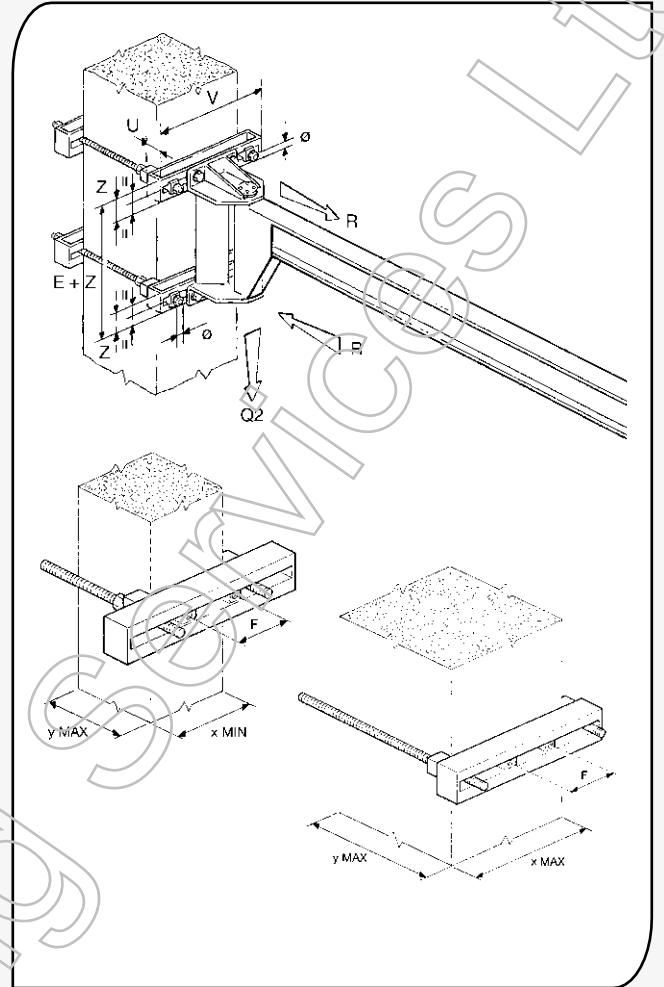


FIXING SYSTEMS FOR JIB CRANES

BRACKET AND STAYBOLTS UNIT FOR GBP/MBB/MBE WALL-MOUNTED CRANES

Size of crane	A	B	C	D	E	F	
Reactions (kN)	Q2	2.95	5	9.2	16.85	26.10	25.6
	R	11.9	21.75	27.05	49	66.8	120
Type of bracket	01		02		03		
Ø Staybolts	M14		M20		M30		
Clamping couples (Nm)	67		200		685		
Bracket type: Short (mm)	Code	GBP010110	GBP020110	GBP030110			
	U	50	60	80			
	V	400	490	532			
	Z	75	90	135			
Weight (kg)	21	36	75				
Pillar dimensions (mm)	x min	200	250	300			
	x max	330	400	400			
	y max	850	810	750			
Bracket type: Medium (mm)	Code	GBP010120	GBP020120	GBP030120			
	U	50	80	100			
	V	530	640	682			
	Z	75	120	145			
Weight (kg)	26	60	96				
Pillar dimensions (mm)	x min	200	250	400			
	x max	460	550	550			
	y max	850	770	710			
Bracket type: Long (mm)	Code	GBP010130	GBP020130	GBP030130			
	U	60	80	120			
	V	720	840	882			
	Z	85	120	155			
Weight (kg)	40	74	132				
Pillar dimensions (mm)	x min	460	550	550			
	x max	650	750	750			
	y max	830	770	670			



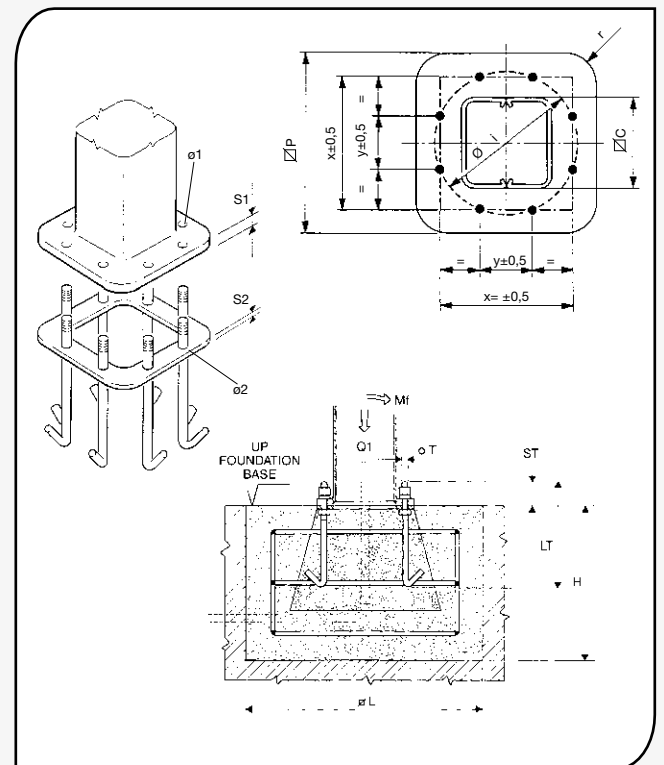
Note: The bracket and staybolts unit, used in the wall-mounted version for fixing the bracket to a pillar, is available on request.

BASE PLATES, FOUNDATION FRAMES AND PLINTHS FOR GBA/CBB/CBE SERIES COLUMN-MOUNTED CRANES

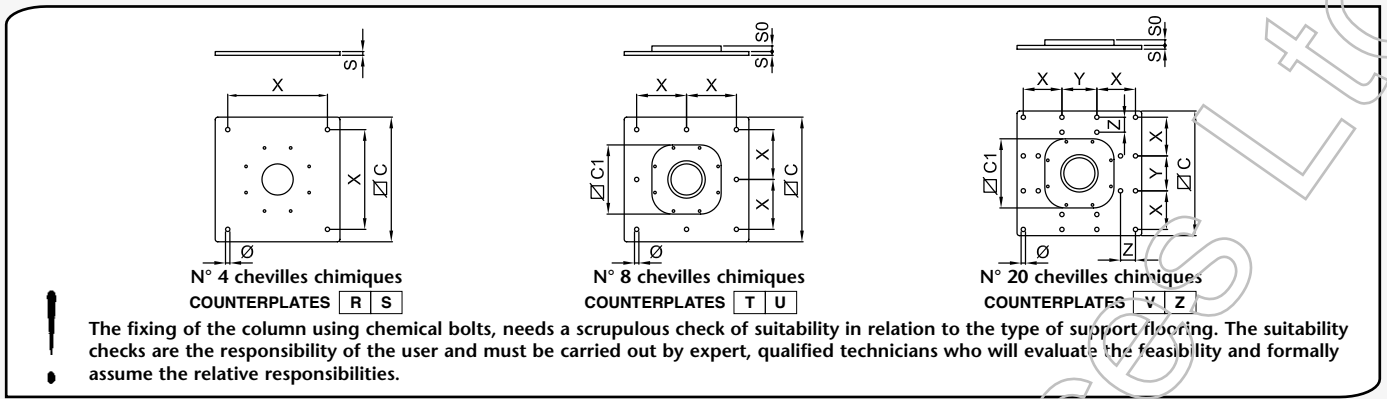
Size	R	S	T	U	V	Z	
Base plate and foundation (mm)	□ C	205	258	296	372	435	515
	□ P	275	340	380	475	555	660
	S1	15	15	15	20	20	25
	S2	8	8	8	8	8	8
	x	247	305	345	432	506	599
	y	103	126	143	179	210	248
	Ø	268	330	373	468	548	648
	r	88	104	116	145	165	197
	ø1	16	20	20	25	29	35
	ø2	13	17	17	21	25	31
Tirafondi (mm)	ØT	M12	M16	M16	M20	M24	M30
	LT	400	450	450	550	600	700
	ST	40	45	45	55	60	75
Clamping couples (Nm)	45	105	105	200	350	680	
Frame/bolts weight (kg)	5	10	11	17	26	47	
Foundation plinth (mm)	□ L	1200	1300	1400	1700	2000	2400
	H	800	800	900	900	1100	1100
Reaction (kN)	Q1	3.3	5.7	10.15	18.4	28.7	29.35
Momentum (kNm)	MF	10	16	30	56	107	163

The dimensions of the plinths are purely indicative! The plinth must be dimensioned by expert, qualified technicians considering the real consistency of the ground and the maximum pressure allowed by this.

Note: The foundation frame with logbolts, used in the column-mounted version for fixing the column itself to the foundation plinth is supplied on request.



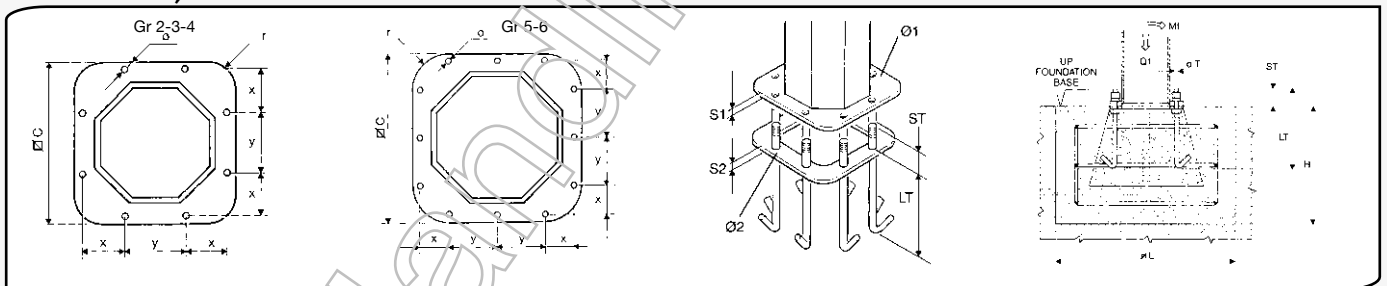
COUNTERPLATES FOR FIXING TO THE FLOOR WITH CHEMICAL BOLTS OF THE GBA/CBB/CBE COLUMN-MOUNTED CRANES



Size of jib crane		R	S	T	U	V	Z
Counterplate code		GBA1R0PS0	GBA1S0PS0	GBA1T0PS0	GBA1U0PS0	GBA1V0PS0	GBA1Z0PS0
Counterplate measurements (mm)	∅ C	500	500	700	700	1000	1200
	∅ C1	-	-	380	475	555	660
	S	15	20	15	20	20	20
	S0	-	-	20	25	30	40
	X	340	400	250	300	300	370
	Y	-	-	-	-	300	380
	Z	-	-	-	-	120	185
	Nr x ∅	4x15	4x19	8x19	8x25	20x25	20x25
Counterplate weight (kg)		26	31	66	95	190	307
Maximum tilting momentum allowed (kNm) Mf		10.3	16	30	56	107	163.5
Fixing characteristics	Type of concrete of the floor: Class Rck minimum (kg/cm ²)	250	250	250	250	250	250
	Type of chemical bolts (e.g. HILTI HVU with threaded bars HILTI HAS)	M12	M16	M16	M20	M20	M20
	Minimum thickness of the block of the floor (mm)	140	170	170	220	220	220
	Diameter of the hole in the floor (mm)	14	18	18	24	24	24
	Depth of the hole in the concrete of the floor (mm)	110	125	125	170	170	170
	Clamping couples of the anchors (HILTI) (Nm)	50	100	100	160	160	160
	Minimum resistance to traction of one anchor (kN)	18	26	26	38	38	38

For the clamping couples of the bolts between the column and the counterplate, see the relative clamping couples for the logbolts page 28

BASE PLATES, FOUNDATION FRAMES FOR GBR SERIES COLUMN-MOUNTED CRANE



Size of jib crane		2	3	4	5	6	
Base plate and foundation frame (mm)	∅ C	750	860	910	1100	1220	
	S1	20	25	30	35	40	
	S2	10	10	10	10	10	
	x	199	230	241	185	215	
	y	281	325	341	320	350	
	∅1	27	33	39	39	39	
	∅2	25	31	37	37	37	
	r	150	170	180	220	240	
Anchorage bolts (mm)	∅T	M 24x3	M 30x3.5	M 36x4	M 36x4	M 36x4	
	LT	600	700	800	800	800	
	ST	90	105	125	130	135	
Clamping couples for the logbolts (Nm)		350	680	1200	1200	1200	
Weight of the frame with logbolts (kg)		34.5	52.5	80	113	120	
Foundation plinth (mm) (see warnings on the preceding page)	∅ L	2500	3000	3200	4000	4200	
	H	1150	1300	1300	1300	1300	
Jib crane max. weight (without hoist and trolley)		Q1	1540	2520	2870	3785	4180
Maximum tilting momentum (kNm) Mf		179	270	335	649	788	