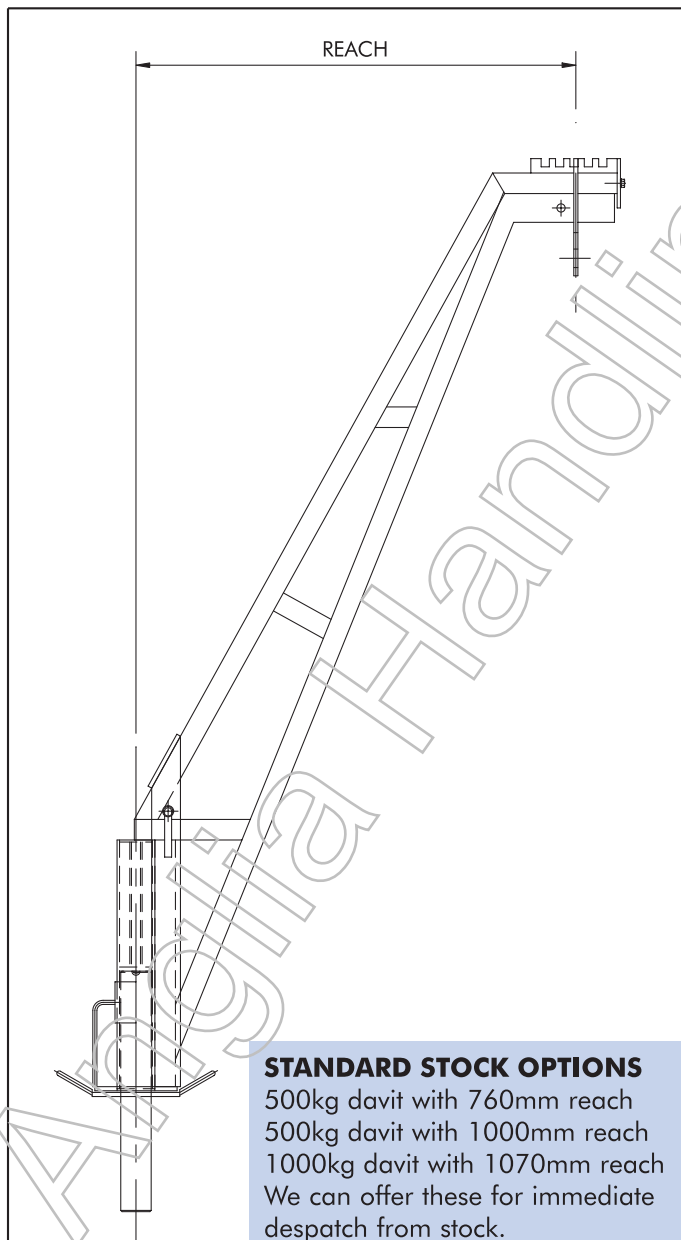
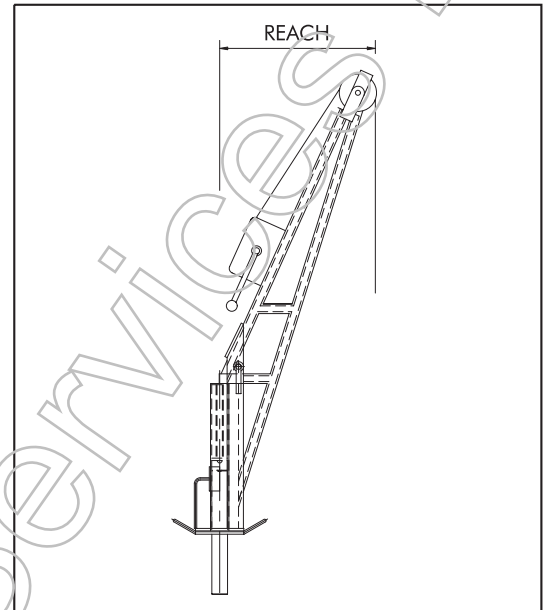


## LEAN-OVER TYPE DAVIT

This type of davit is mainly used in locations where there are no restrictions in its movement. The davit is an industry standard. It is supplied in three parts; each of the parts are guided by the manual handling regulations. It is fitted with castellated offset shackle allowing the chain block to be adjusted from the central point of lift. The davit pin size for both the 500 and 1000 kilos are industry standard. The 500 kilos being 65mm pin and the 1000 kilos a 75mm pin. As a manufacturer we can produce davits with a greater height and reach in both the 500 and 1000 kilos SWL.

## MANRIDING DAVITS

Our range also includes manriding davits, equipped with certified winches. We can manufacture these to suit your individual requirements. It is standard practice to supply all manriding davits with wire ropes in stainless steel. The manriding davits also utilise the same size sockets. They are equipped with fall arrestor location and winches, fitted with stainless steel wire rope.

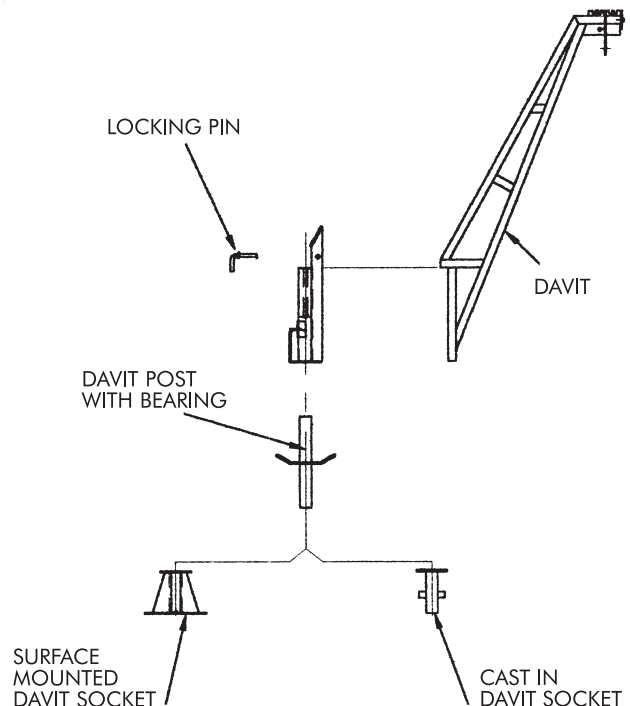


**STANDARD STOCK OPTIONS**  
 500kg davit with 760mm reach  
 500kg davit with 1000mm reach  
 1000kg davit with 1070mm reach  
 We can offer these for immediate despatch from stock.

### DAVIT

Fitted with winches, stainless steel sheave wheels and wire rope fitted as standard to avoid future maintenance problems. All davits galvanised to BS1461.

GENERAL ARRANGEMENT OF 500KG SWL 760 REACH LIFTING DAVIT WITH WINCH.



Arrangement showing davit assembly. Each component maximum weight 25kg.

DAVITS AND SOCKETS AVAILABLE IN 500 AND 1000KG SWL. INDIVIDUAL SPECIFICATIONS MADE TO YOUR REQUIREMENTS.