

Supplied as standard with Lug suspension point



Pendants shown are for illustration purposes only. Supplied as standard with Telemecanique® (See pg. 4).



Yale CPV/F

- 1877 Yale designs the first spur geared hand chain hoist incorporating the Weston screw-and-disc type load brake. The design principle is used today for almost all hand chain hoists.
- 1936 Yale start manufacturing of hoists with production of the world renowned Yale Pul-Lift® ratchet lever hoist. This robust and reliable tool was (and still is) the key product establishing Yale's reputation in hoisting technology in Europe and abroad. To date more than one million Yale Pul-Lift® units have been manufactured at our German plant.
- 1985 A new era began with the formation of Yale Industrial Products. By continuous and innovative product development and expanding the international network through Yale sales organisations and distributors Yale Industrial Products has gained a leading position for hoisting equipment.
- 2002 Yale presents the Yalelift 360. Areas of operation as well as operator conditions have been improved considerably. Innovative thinking and design give additional flexibility, the operator is no longer forced to work in the danger zone near the load.
- 2008 Yale starts production for the new electric chain hoist model Yale CPV/F.

Features

Features include:

- Load sprocket and chain guide can easily be inspected or removed without disassembly of the complete unit.
- Designed to FEM 1Am.
- Main line contactor for increased safety.
- Two year warranty (excluding wearing parts) and a life time lubricated gearbox.
- Thermal overload protection as standard for the whole range. Optimised housing for improved cooling.
- Duty cycle 50% ED for single speed.
- Electromagnetic spring pressure brake holds the load safely even in the event of power failure.
- The externally adjustable slipping clutch is designed to guarantee a permanent connection between the load and the brake.
- Motor protected to IP 55 against ingress of dust and water.
- Standard operating voltage: 400v, 3-phase.
- Increased operating safety through 42v low voltage control with encapsulated pendant control to IP 65.
- Suspension lug (as standard) for reduced headroom and easy integration into trolley applications.
- Chain guide made of glass reinforced polyamide for increased wear resistance.
- The oil bath lubricated gearbox contains case hardened helical cut gearing for smooth, low noise running and enhanced lifetime.
- Fully compatible with the VTE/S range of trolleys.

Optional extras:

- Suspension hook.
- Manual and electric trolleys.
- Festoon cable system.
- Stainless steel load chain.
- Radio remote control.
- Other operating voltages.

Technical data Yale CPV/F

Model	Capacity in kg / number of chain falls	Chain dimension d x p mm	Lifting speed main lift m/min	Lifting speed fine lift m/min	Hoist motor kW	Net weight* suspension lug kg	Net weight* push trolley** kg	Net weight* electric trolley*** kg
CPV 2-8	250/1	4 x 12.2	8	-	0.37	24	39	47
CPV/F 2-8	250/1	4 x 12.2	8	2	0.37/0.09	25	40	48
CPV 5-4	500/2	4 x 12.2	4	-	0.37	25	40	48
CPV/F 5-4	500/2	4 x 12.2	4	1	0.37/0.09	26	41	49
CPV 5-8	500/1	5 x 15.1	8	-	0.75	26	41	49
CPV/F 5-8	500/1	5 x 15.1	8	2	0.75/0.18	27	42	50
CPV 10-4	1000/2	5 x 15.1	4	-	0.75	28	43	51
CPV/F 10-4	1000/2	5 x 15.1	4	1	0.75/0.78	29	44	52
CPV 10-8	1000/1	7.1 x 20.5	8	-	1.5	58	77	84
CPV/F 10-8	1000/1	7.1 x 20.5	8	2	1.5/0.37	59	78	85
CPV 20-4	2000/2	7.1 x 20.5	4	-	1.5	63	82	89
CPV/F 20-4	2000/2	7.1 x 20.5	4	1	1.5/0.37	64	83	90

*Weight for standard 3 m lift. Other lifting heights on request.

**For trolleys type A and B: Additional weight for geared trolley (VTG): 2.5 kg.

***For electric trolley (VTE) with 2 speeds +2.0 kg.

Technical data trolleys

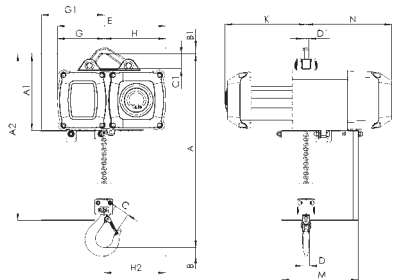
Suitable for model	Capacity kg	Size	Beam flange width b mm	Beam flange thickness t max. mm	Curve radius min. m	Electric trolley travel speed m/min at 50 Hz	Electric trolley motor kW at 50 Hz
from CPV 2-8 upto CPV/F 10-4	1000	A	58 - 180	19	0.9	18 or 18/4.5	0.18 or 0.18/0.06
from CPV 2-8 upto CPV/F 10-4	1000	B	180 - 300	19	0.9	18 or 18/4.5	0.18 or 0.18/0.06
from CPV 10-8 upto CPV/F 20-4	2000	A	58 - 180	19	1.15	18 or 18/4.5	0.18 or 0.18/0.06
from CPV 10-8 upto CPV/F 20-4	2000	B	180 - 300	19	1.15	18 or 18/4.5	0.18 or 0.18/0.06

Dimensions Yale CPV/F

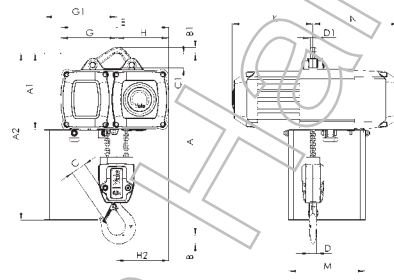
Model	CPV/F 2-8	CPV/F 5-4	CPV/F 5-8	CPV/F 10-4	CPV/F 10-8	CPV/F 20-4
A, mm	353	393	353	430	428	524
A1, mm	196	196	196	196	234	234
A2 (Size I), mm	376	376	376	376	464	464
A2 (Size II), mm	426	426	426	426	544	544
A2 (Size III), mm	506	506	506	506	-	-
B, mm	22	22	22	29	29	37
B1, mm	15	15	15	15	20	20
C, mm	29	29	29	35	35	40
C1, mm	38	38	38	38	45	45
D, mm	15	15	15	21	21	26
D1, mm	15	15	15	15	15	15
E, mm	277	277	277	277	326	326
G, mm	120	144	120	144	140	173
G1 (Size I), mm	142	142	142	142	208	208
G1 (Size II), mm	162	162	162	162	208	208
G1 (Size III), mm	162	162	162	162	-	-
H, mm	157	133	157	133	186	154
K (CPV), mm	207	207	207	207	285	285
K (CPV/F), mm	207	207	207	207	285	285
M (Size I), mm	162	162	162	162	208	208
M (Size II), mm	197	197	197	197	208	208
M (Size III), mm	197	197	197	197	-	-
N, mm	219	219	219	219	274	274

Dimensions Yale CPV/F

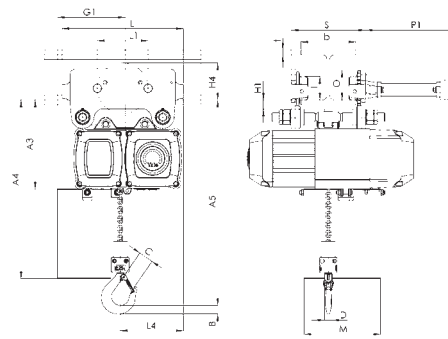
Model	CPV/F 2-8	CPV/F 5-4	CPV/F 5-8	CPV/F 10-4	CPV/F 10-8	CPV/F 20-4
A3, mm	228	228	228	228	263	263
A4 (Size I), mm	408	408	408	408	493	493
A4 (Size II), mm	458	458	458	458	573	573
A4 (Size III), mm	538	538	538	538	-	-
A5, mm	385	425	385	462	456	553
b, mm	A = 50 - 180 / B = 180 - 300					
H1, mm	24	24	24	24	23	23
H2, mm	158	158	158	158	186	186
H3, mm	129	129	129	129	129	129
H4 (VTG), mm	95	95	95	95	95	95
H4 (VTE), mm	120	120	120	120	120	120
I (VTP), mm	72	72	72	72	96	96
I (VTG), mm	77	77	77	77	98	98
L (VTP/VTG), mm	310	310	310	310	360	360
L1, mm	130	130	130	130	150	150
L2 (CPV), mm	265	265	265	265	265	265
L2 (CPV/F), mm	265	265	265	265	265	265
L3, mm	155	155	155	155	180	180
L4, mm	161	161	161	161	203	203
O, mm	60	60	60	60	80	80
P, mm	200	200	200	200	200	200
P1, mm	246	246	246	246	246	246
S, mm	b+50	b+50	b+50	b+50	b+54	b+54
T, mm	95	95	95	95	95	95
tmax., mm	19	19	19	19	19	19



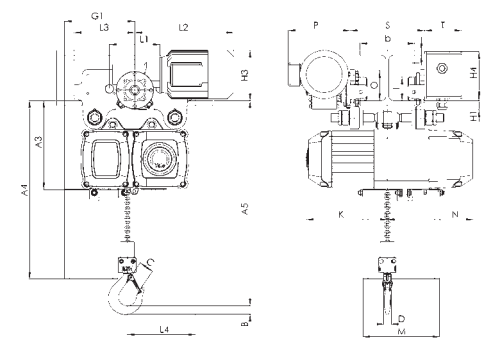
Model Yale CPV/F
with suspension bracket, 125 - 1000 kg, single fall



Model Yale CPV/F
with suspension bracket, 500 - 2000 kg, double fall



Model Yale CPV/F
with integrated manual push or geared trolley



Model Yale CPV/F
with integrated electric trolley