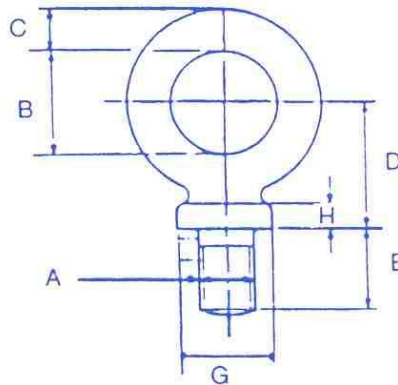


Dynamo Eyebolts to BS 4278 1984



Metric Coarse Thread

SWL (KGs)	A (mm)	B (mm)	C (mm)	D (mm)	E (mm)	G (mm)	H (mm)
*100	6	22	9	27	18	17	5
*150	8	22	9	27	18	17	5
*250	10	22	9	27	18	17	5
320	12	22	9	27	18	17	5
*500	14	32	13	41	28	29	9
630	16	29	11	34	23	23	6
*1000	18	40	15	47	32	32	9
1250	20	40	15	47	32	32	9
*1600	22	44	17	53	35	35	14
2000	24	51	19	60	40	40	12
3200	30	64	24	76	51	51	14

BSW Thread

SWL (KGs)	A (inches)	B (inches)	C (inches)	D (inches)	E (inches)	G (inches)	H (inches)
100	1/4	7/8	3/8	1.1/16	3/4	3/4	1/4
150	5/16	7/8	3/8	1.1/16	3/4	3/4	1/4
250	3/8	7/8	3/8	1.1/16	3/4	3/4	1/4
500	1/2	1.1/16	7/16	1.3/8	1	1	5/16
800	5/8	1.1/4	1/2	1.5/8	1.1/8	1.1/8	3/8
1200	3/4	1.9/16	11/16	2.1/8	1.1/4	1.7/16	1/2
1600	7/8	1.3/4	11/16	2.5/16	1.3/8	1.3/8	9/16
2200	1	2	13/16	2.7/16	1.13/16	1.5/8	1/2
2650	1.1/8	2.3/8	1	2.7/8	2.1/16	2.1/8	3/4
3500	1.1/4	2.3/8	1	2.7/8	2.1/16	2.1/8	3/4

Sizes marked * are additional and proportional to the specification.

Long shank Collared and Dynamo eyebolts are also available.

Other thread sizes are also available.