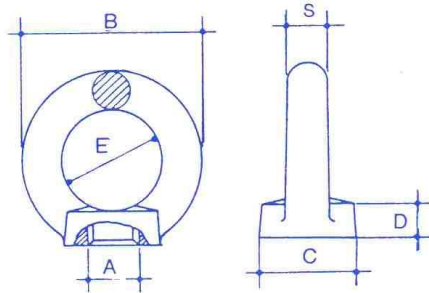
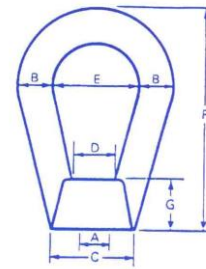


## Eye and Bow Nuts



Eye Nut



Bow Nut

### Eye Nuts - Metric Coarse Thread

SWL (kgs)	A (mm)	B (mm)	C (mm)	D (mm)	E (mm)	S (mm)
70	6	36	20	8.5	20	8
140	8	36	20	8.5	20	8
230	10	45	25	10	25	10
340	12	54	30	11	30	12
490	14	63	35	13	35	14
700	16	63	35	13	35	14
1200	20	72	40	16	40	16
1500	22	81	45	18	45	18
1800	24	90	50	20	50	20
2500	27	90	50	20	50	20
3200	30	108	65	25	60	24
4300	33	108	65	25	60	24
4600	36	126	75	30	70	28
6100	39	126	75	30	70	28
6300	42	144	85	35	80	32
8000	45	144	85	35	80	32
8600	48	166	100	40	90	38

Sizes marked \* are additional and proportional to the specification

### Bow Nuts - Metric Coarse Thread

SWL (kgs)	A (mm)	B (mm)	C (mm)	D (mm)	E (mm)	F (mm)	G (mm)
230	8	10	32	16	25	64	16
360	10	10	32	16	25	64	16
530	12	12	38	18	30	73	17
1010	16	12	38	18	30	73	17
1580	20	14	45	25	40	102	25
2280	24	17	50	28	50	124	29
3650	30	26	70	38	75	149	29
5340	36	26	70	38	75	149	29

Other thread sizes are also available.